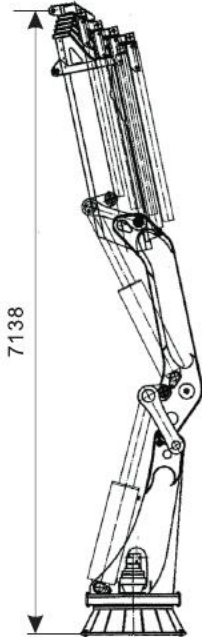
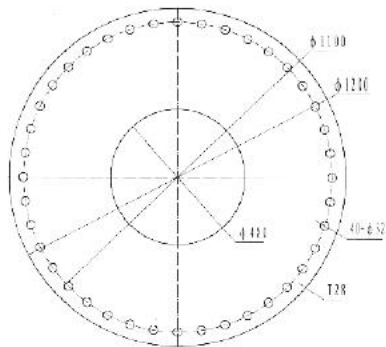
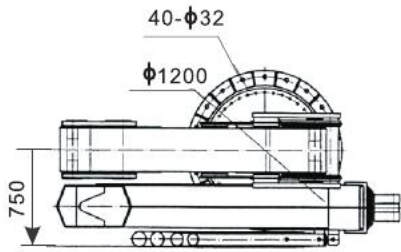


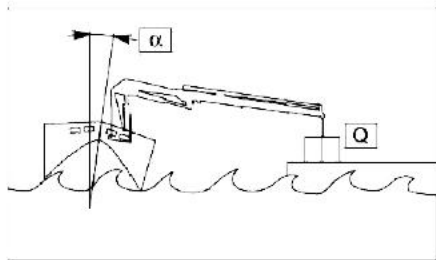
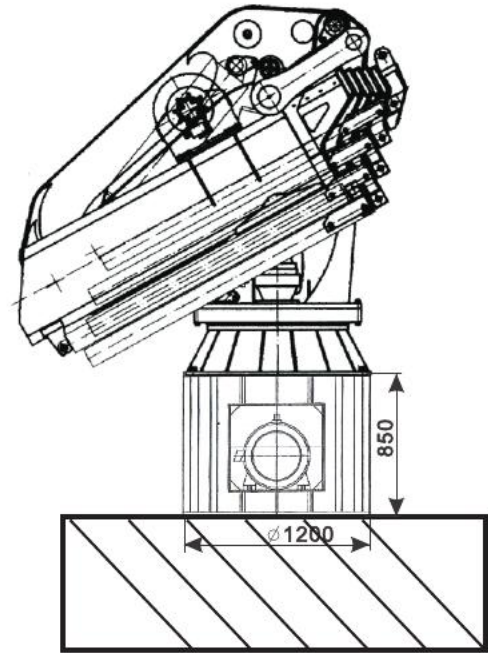
680M	m	1.85	2.50	4.73	6.53	8.37	10.27	12.21	14.07
	kg	32000	23000	12200	8800	6500	5300	4500	3600



BS 680M	
Lifting Capacity(KN.m)	630
Standard Reach(m)	14.07
Rotation	∞
Working Pressure(MPa)	31
Pump Capacity(cc/r)	80
Oil Tank Capacity (L)	190
Crane Weight (kg)	6300±50

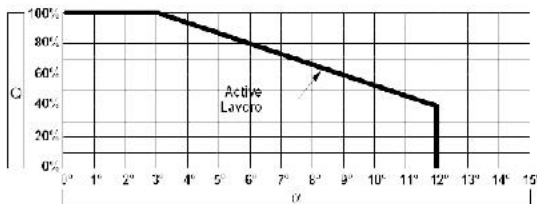
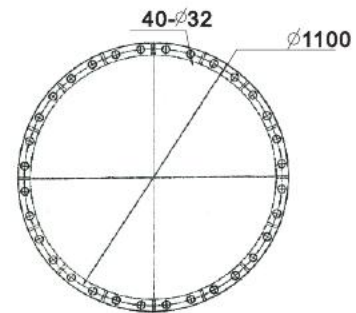


Mounting Plate



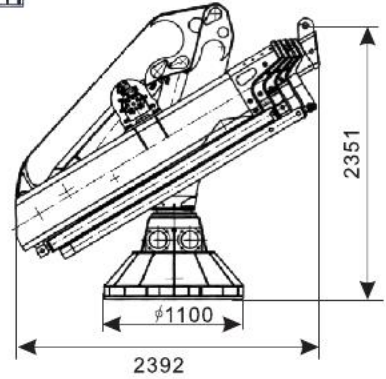
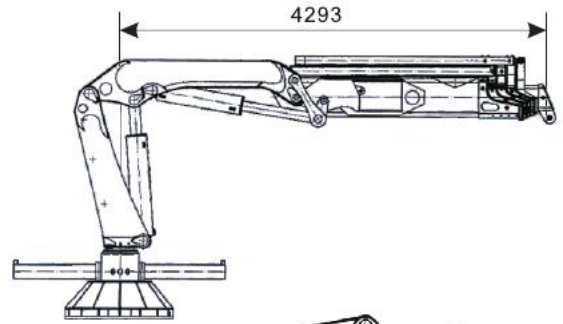
Power Station Parameter

Oil tank capacity (L)	300L
Power (KW)	22kw
Pump capacity (cc/r)	Below 60cc



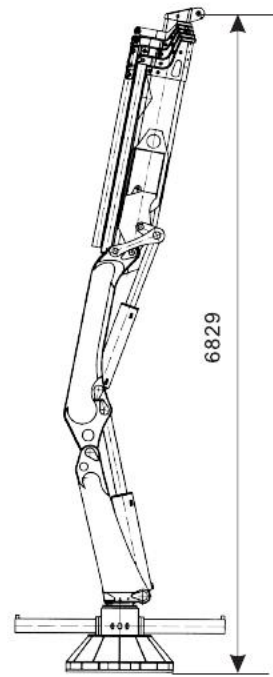
Options:

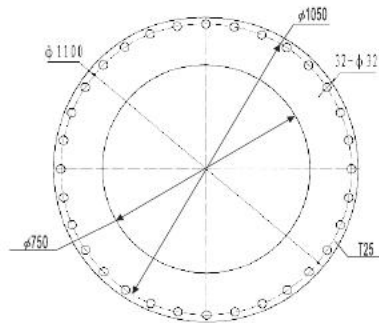
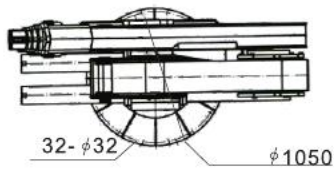
1. Power Station
2. Rod plating: Hard Cr or WC or Ceramic(Cr2O3)
3. Fitting & Coupling: Stainless Steel or Zn plated
4. Winch



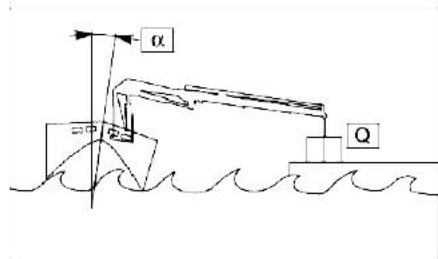
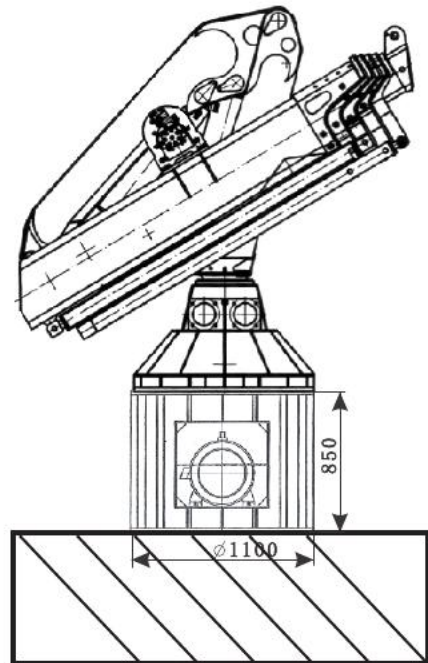
230M	m	1.89	2.5	4.29	6.11	7.98	9.89	11.81
	kg	11000	8800	5000	3600	2600	2100	1650

BS 230M	
Lifting Capacity(KN.m)	220
Standard Reach(m)	11.81
Rotation	385°
Working Pressure(MPa)	28
Pump Capacity(cc/r)	Below 60
Oil Tank Capacity (L)	120
Crane Weight (kg)	3150±50



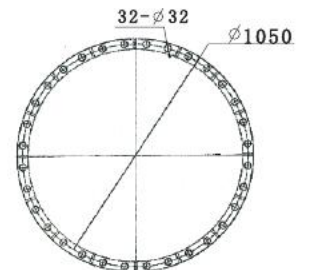


Mounting Plate

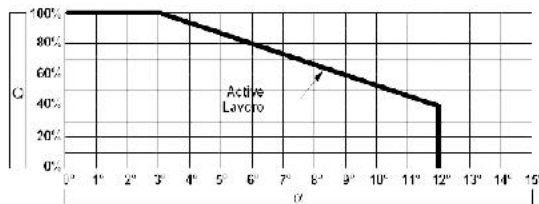


Power Station Parameter

Oil tank capacity	300L
Power (KW)	18.5kw
Pump capacity (cc/r)	Below 60cc

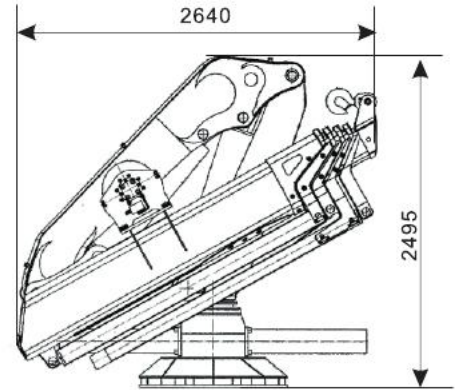


Power Station



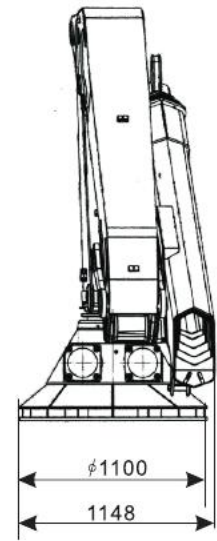
Options:

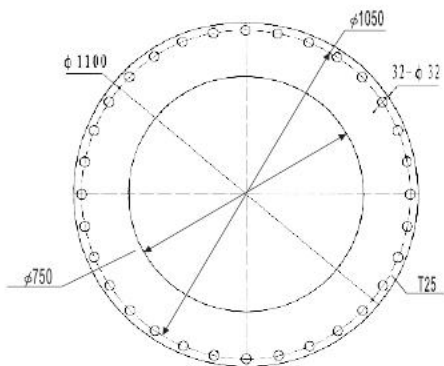
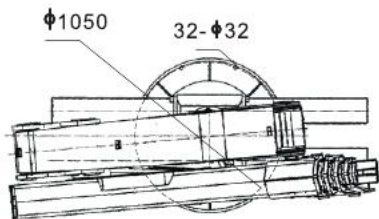
1. Power Station
2. Rod plating: Hard Cr or WC or Ceramic(Cr203)
3. Fitting & Coupling: Stainless Steel or Zn plated
4. Winch



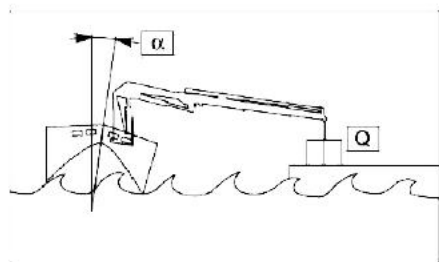
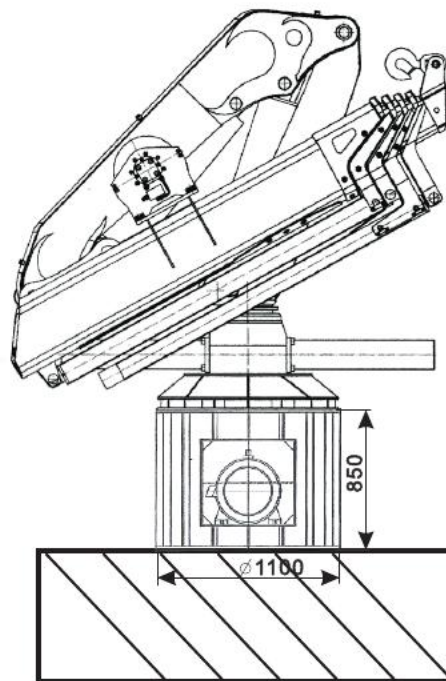
300M	m	1.88	2.5	4.48	6.37	8.31	10.22	12.14
	kg	15000	12000	6150	4180	3150	2580	2200

BS 300M	
Lifting Capacity(KN.m)	300
Standard Reach(m)	12.14
Rotation	385°
Working Pressure(MPa)	30
Pump Capacity(cc/r)	40-100
Oil Tank Capacity (L)	160
Crane Weight (kg)	4080±50



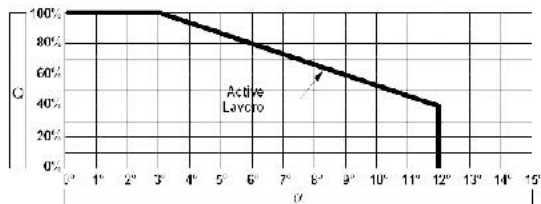
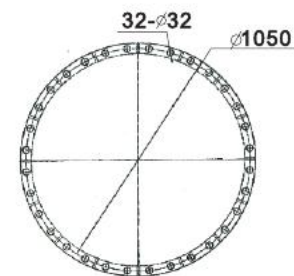


Mounting Plate



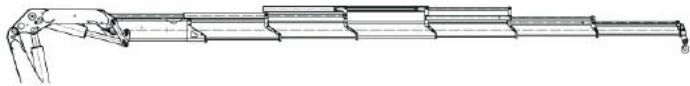
Power Station Parameter

Oil tank capacity (L)	300L
Power (KW)	18.5kw
Pump capacity (cc/r)	Below 60cc

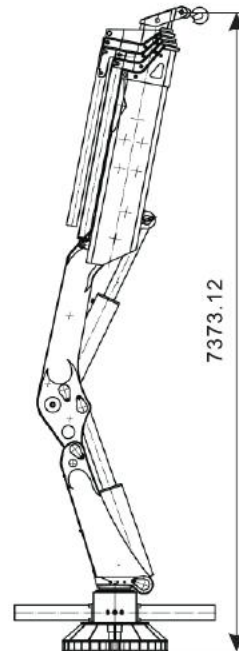
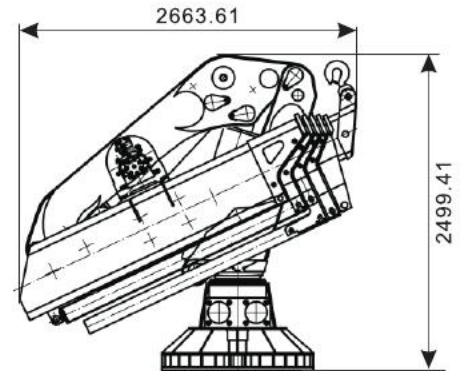
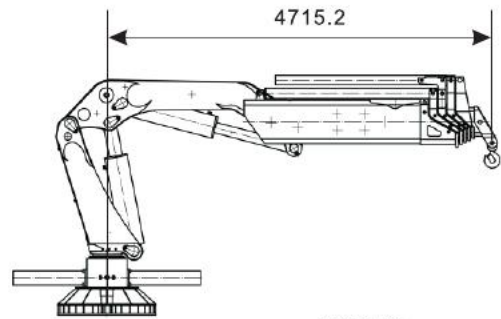


Options:

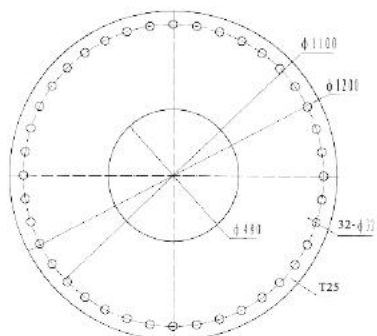
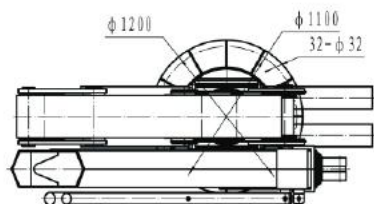
1. Power Station
2. Rod plating: Hard Cr or WC or Ceramic(Cr203)
3. Fitting & Coupling: Stainless Steel or Zn plated
4. Winch



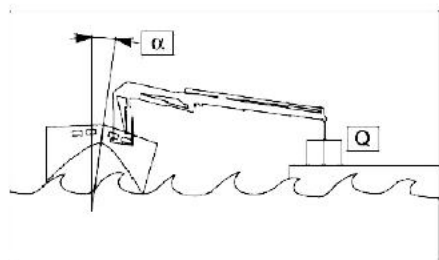
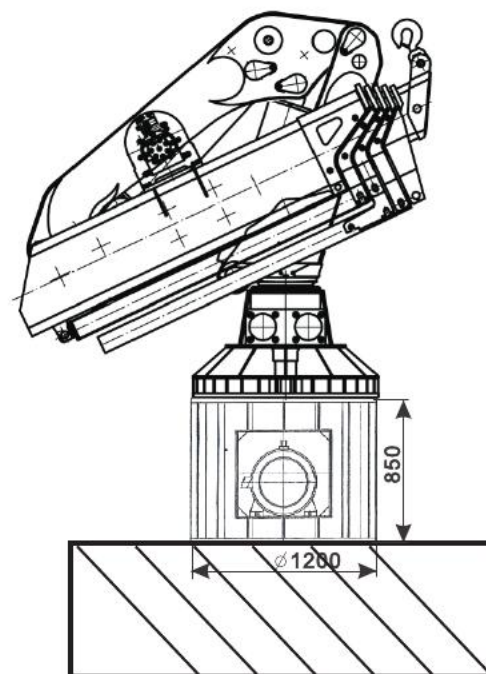
500.4M	m	1.72	4.37	6.2	8.06	9.98	11.90		
	kg	25000	9300	6500	4730	3920	3325		
500.6M	m	1.72	4.51	6.33	8.20	10.11	12.03	13.95	15.92
	kg	25000	8400	5750	4450	3600	3050	2700	2500



	BS 500M.4	BS 500M.6
Lifting Capacity(KN.m)	500	500
Standard Reach(m)	11.9	15.92
Rotation	365°	365°
Working Pressure(MPa)	28	28
Pump Capacity(cc/r)	Below 80	Below 80
Oil Tank Capacity (L)	190	190
Crane Weight (kg)	±50	±50

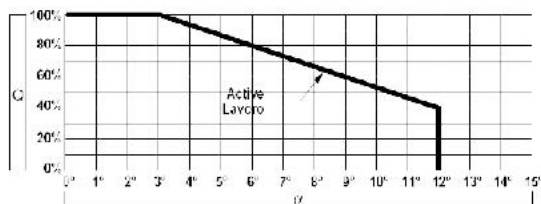
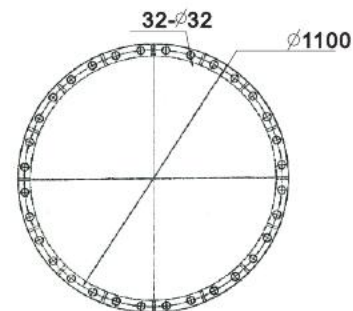


Mounting Plate



Power Station Parameter

Oil tank capacity (L)	300L
Power (KW)	22kw
Pump capacity (cc/r)	Below 60cc



Options:

1. Power Station
2. Rod plating: Hard Cr or WC or Ceramic(Cr203)
3. Fitting & Coupling: Stainless Steel or Zn plated
4. Winch